



GIVE TO COLOMBIA®

**Community Development through integral
financial and asset building oportunities**

2008

Content



1. Give to Colombia

2. Integral Community Development Project



Give to Colombia (G2C) is a US-based nonprofit organization with a 501c3 status that creates, promotes and facilitates alliances between international donors and Colombian grassroots organizations. G2C advises donors on how to channel grants, talents and technologies to achieve scalable, sustainable and high impact projects



In 2004, USAID provided seed capital for G2C's creation. G2C was conceived as an effective vehicle designed to increase the flow of international donations to Colombia and become a sustainable engine for the country's social and economic development



Our model is based on key success factors which guarantee our optimal operations and maximize our social impact



GIVE TO COLOMBIA®



Provide added value solutions to donors

Promote bridges, alliances, and cooperation between private, public and third sector

Provides trustworthy information on Colombia's social needs

Create awareness and promote support among the Colombian Diaspora and the international community

- We work hand-in-hand with potential implementing organizations and the donor using a tailor made approach, we structure budgets, develop methodologies, identify beneficiary populations, and design non-existing projects or scale up and improve existing initiatives.
- We provide management and supervision, including financial and legal accountability to donors.



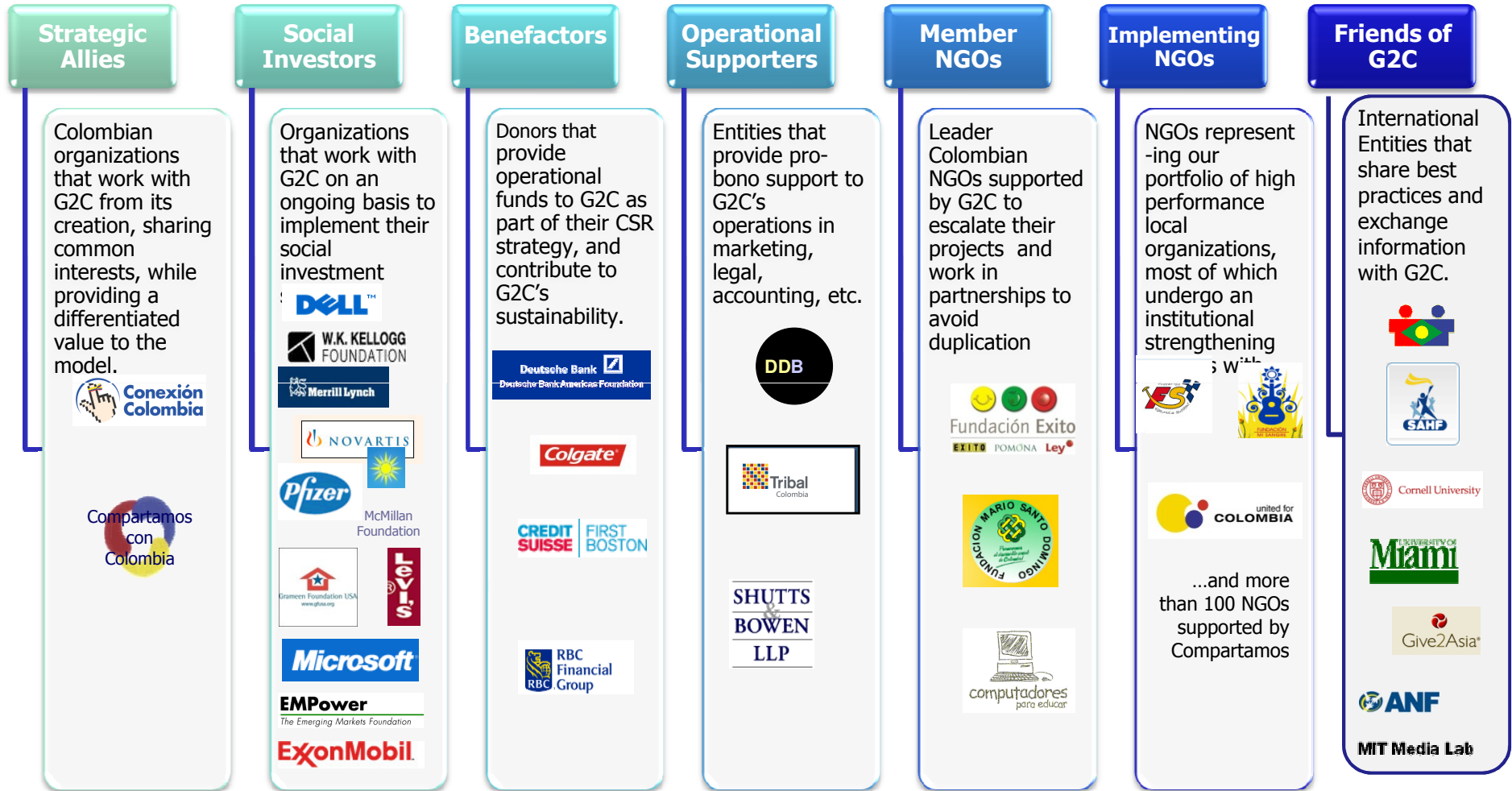
GIVE TO COLOMBIA®

Give to Colombia concentrates its efforts in three strategic pillars, which are key to promote peace, strengthen democracy and encourage equality and prosperity



Give to Colombia will become the most professional, transparent and effective mean to channel resources to Colombia

Give to Colombia offers a wide array of alliance possibilities and services for both donors and Colombian NGOs



The Mario Santo Domingo Foundation has worked for the past 50 years on significantly improving the living standards of low-income Colombian families



The Mario Santo Domingo Foundation (MSDF), created almost 50 years ago and supported by the Bavaria Group and the Santo Domingo Family, supports innovative economic development initiatives in Colombia. Through the development of micro credit programs, support and training for micro-entrepreneurs, and the *development of an innovative means of asset building*, MSDF has given new life to the microfinance sector. Additionally, MSDF manages integral community impact projects in the areas of Housing, Education and Health.

Areas of Work

- Small Business Development
- Social Development
- Community Development



The Mario Santo Domingo Foundation is providing low-income, vulnerable families with the tools to be agents of their own development



Community Development through integral financial and asset building opportunities

The program provides an integral solution to the needs of the community, from housing to work force development

Housing



Education

Health



Income Generation

Recreation



Environment



Community Organization

By 2010 the program will benefit 13,770 families, including 17,296 students, by aiding them in the development of six sustainable communities in three vulnerable target cities

Goal

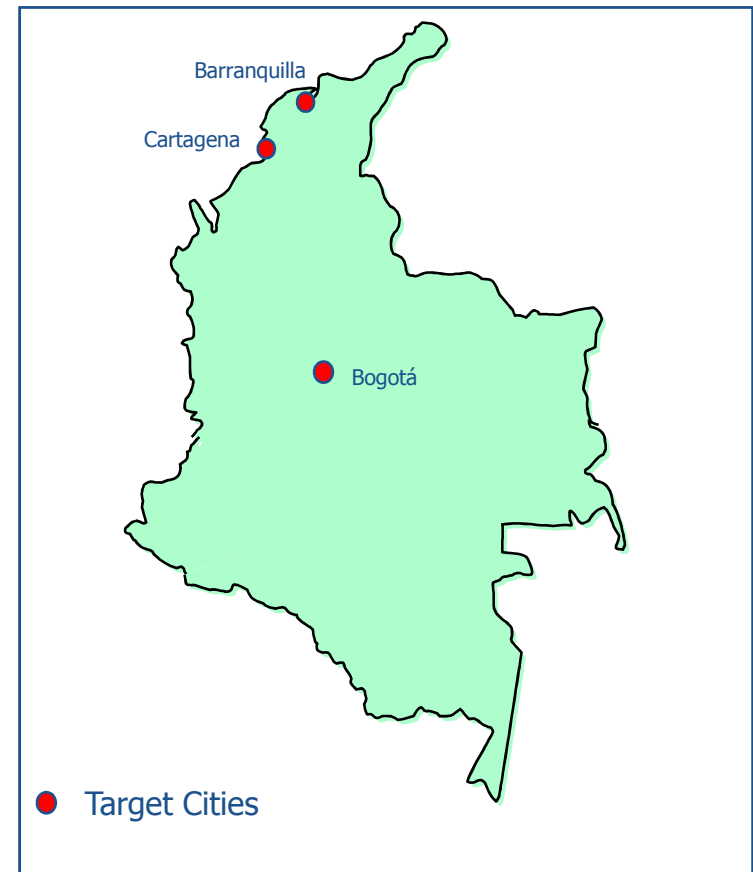
Provide six vulnerable communities with the opportunities and tools to be agents in their own development via an efficient and sustainable response.

Objective

Create two active integral community development projects in each of the three largest and most populated cities with some of the largest displacement influx, in operation by 2010 (Barranquilla, Cartagena and Bogota)

Beneficiaries

55,080 individuals (or 13,770 families), including 17,296 students. All project beneficiaries come from Colombia's lowest socioeconomic groups (Levels 1 and 2 out of 6), and are characterized for its marginalized condition.



The program will provide an integral and sustainable solution to the critical needs of this extremely marginalized population

Beneficiaries' current situation

- Most live in precarious housing and have poor access to public services
- Most are displaced communities, threatened by psychological hardship, strains/loss of their households structure and major economic losses
- Often exposed to prostitution, begging, and delinquency which threatens the community cohesiveness
- Lack of access to Electricity, Sewage, and clean water

The resulting high crime rates and feelings of lack of safety discourage investment and employment in these communities

Community members will construct their own social fabric through access to training and credit to obtain land, housing, and sustainable employment

The Intregal Community Development Project has seven interrelated components:

Project Component	Strategy
Housing	Construction, Credit, Technical Assistance
Education	Construction
Income Generation	Technical and Administrative Training, Credit
Community Organization	Committee Creation, Management
Environment	Credit Funds, Plantings, Recycling Cooperatives, Energy Alternatives
Recreation & Usage of Free Time	Construction and Improvement of Parks and Green Zones
Health	Construction

Content

1. Give to Colombia

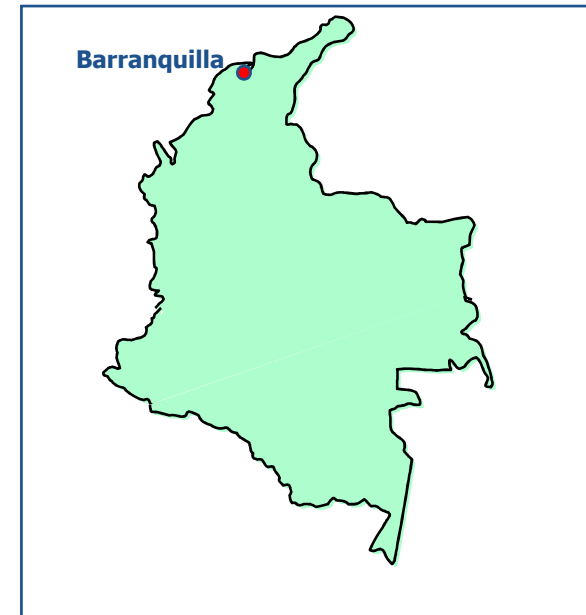


2. Integral Community Development Project

The Villas de San Pablo program is the first of the 6 urban communities, which was launched in 2006 in Barranquilla

PROYECTO DE DESARROLLO INTEGRAL

Villas de San Pablo



Villas de San Pablo will support low-income families in the self-construction of 5,000 housing units per project site in order to help build a healthy and sustainable community

The beneficiaries will play an active role in the creation and management of their own community

Community Management

Self Construction Process

Credit and Non-Credit Financial Services for low income families

Industrial Park for Micro-Entrepreneurs

Community Construction Bank

Technical-Ecological Institute (k-12 school)

Recreational and Green Spaces

Health and Family Planning Services

Police-Community Alliance (Police Station including horse stables)

An interdisciplinary group of professionals from the MSDF will support and advise the community by establishing a permanent office within the complex

Support will cover:

- Organization
- Training
- Advising
- Technical Assistance



Psychologists and Social Workers



Civil Engineers and Architects



Financial Advisors

MSDF will assist in the technical and social development of all the members of the community

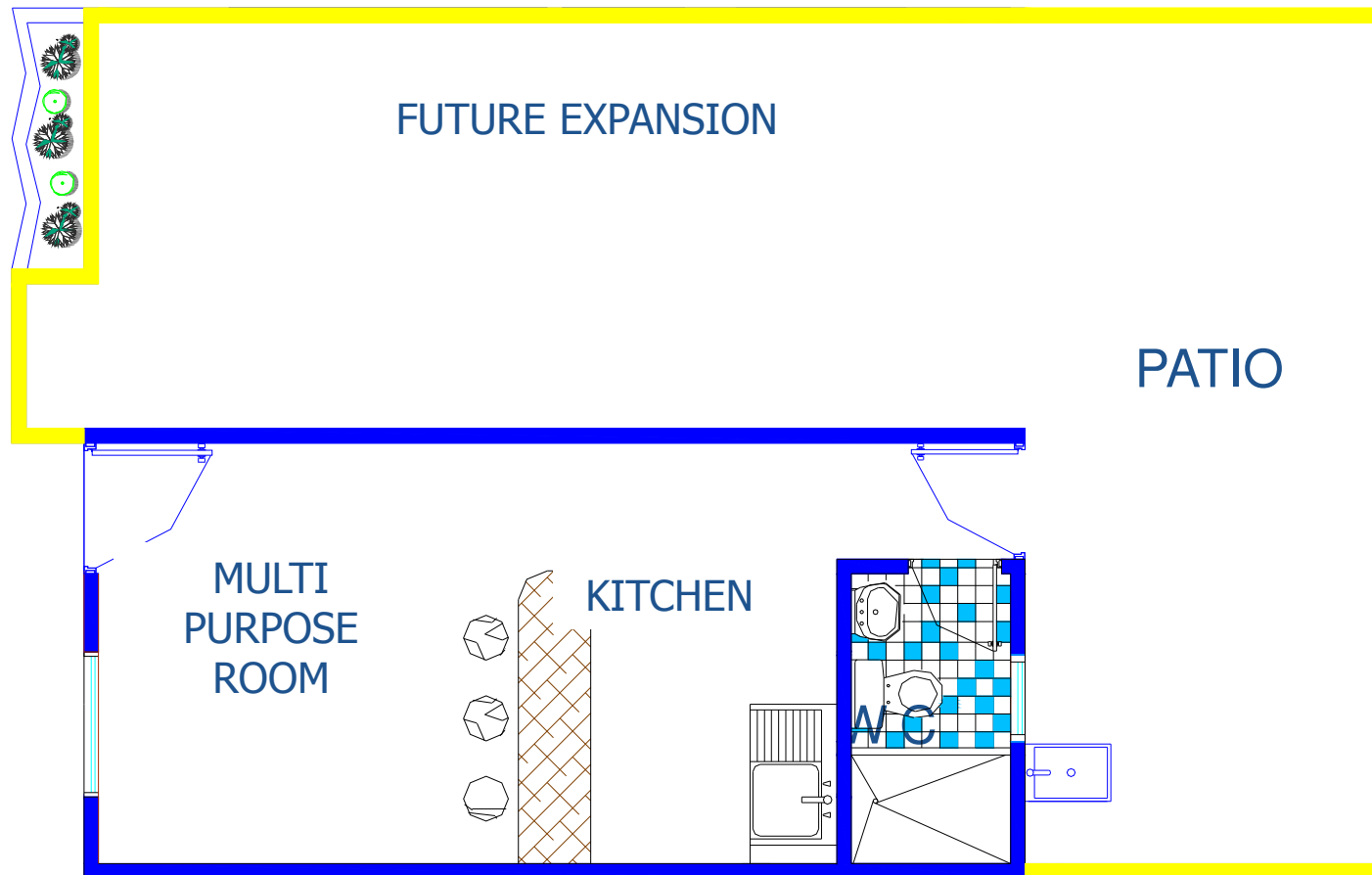


Training will cover:

- Leadership Skills
- Active Citizenship
- Team Work
- Community Organization
- Self-construction process



BASIC HOUSING UNIT



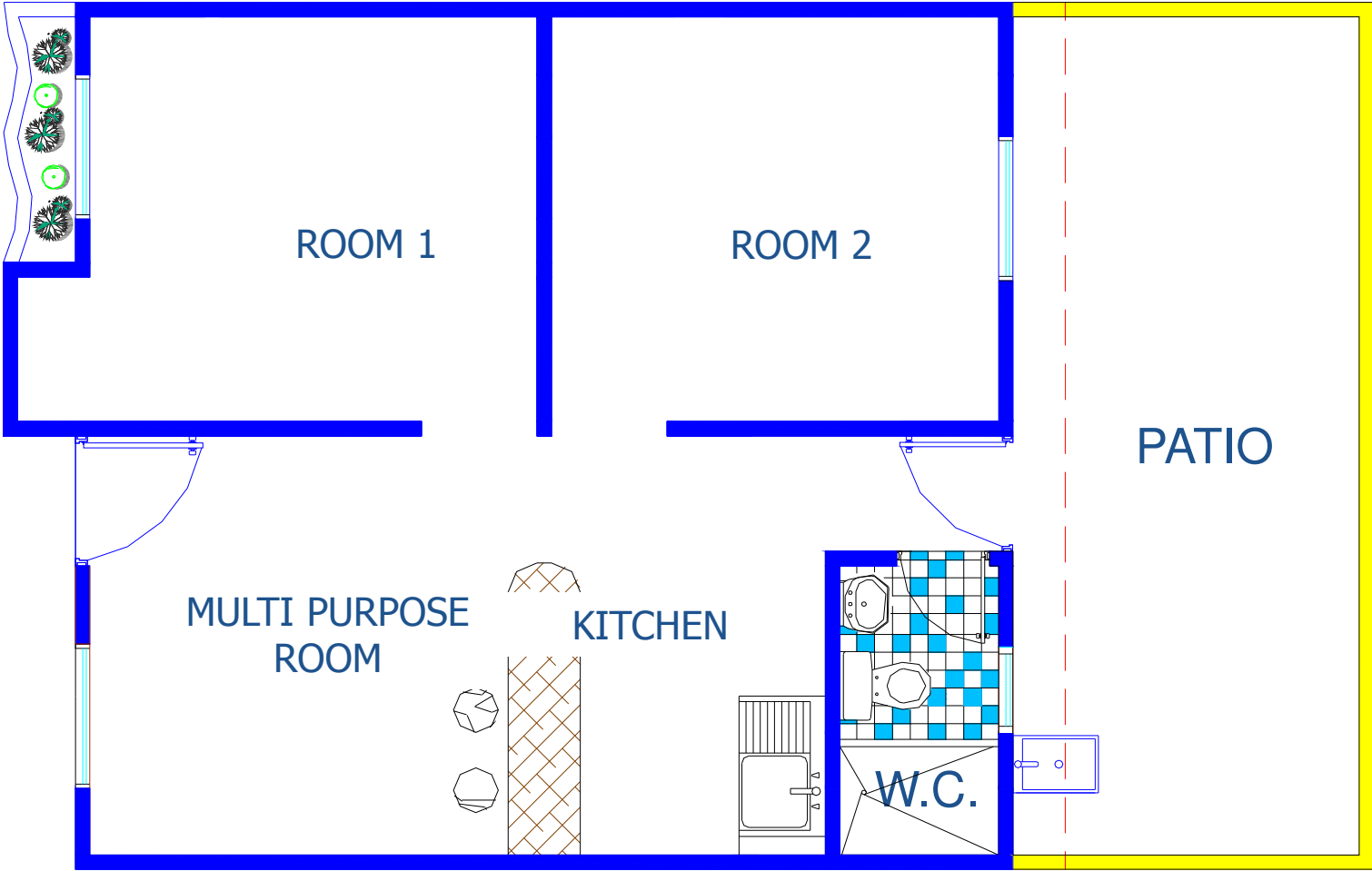
OPTION N° 2

1 ROOM UNIT

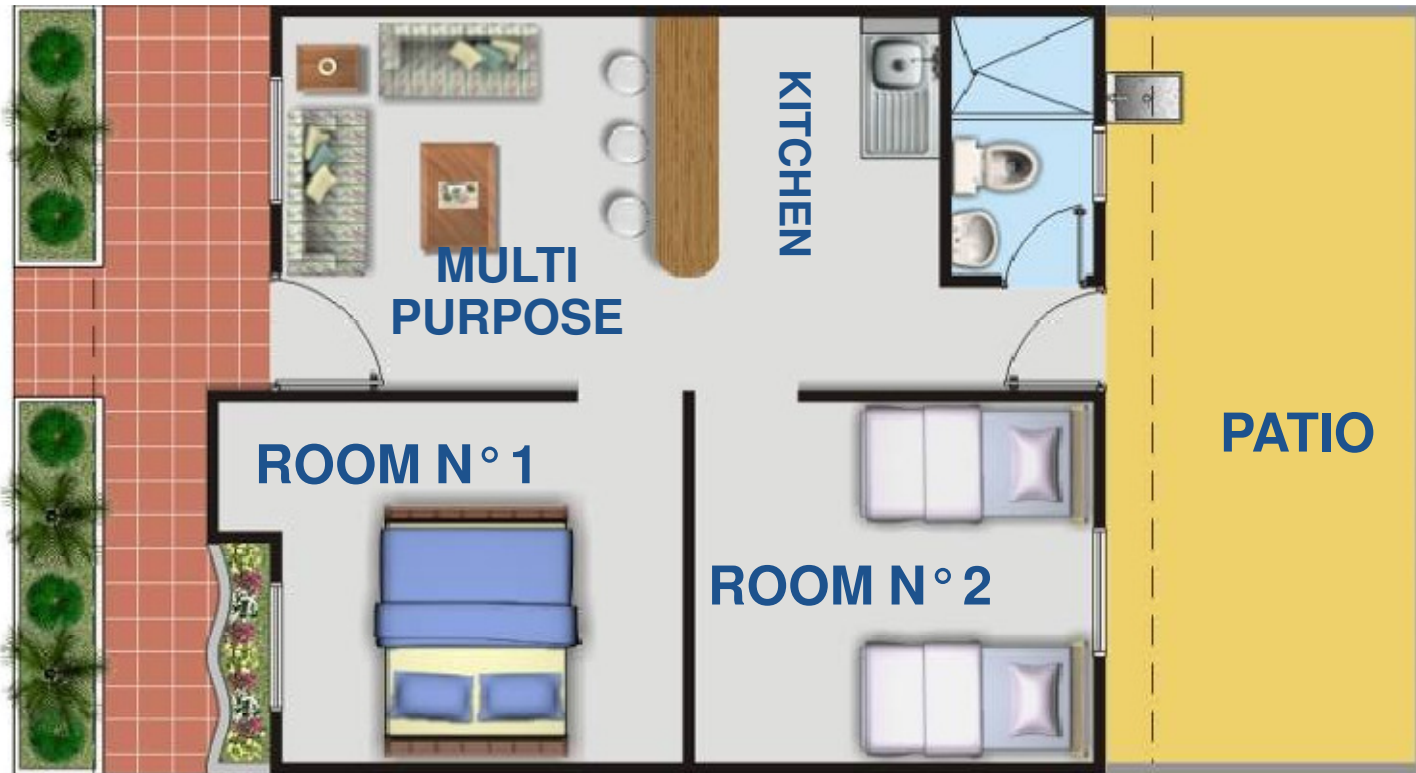


OPTION N° 3

2 ROOM UNIT



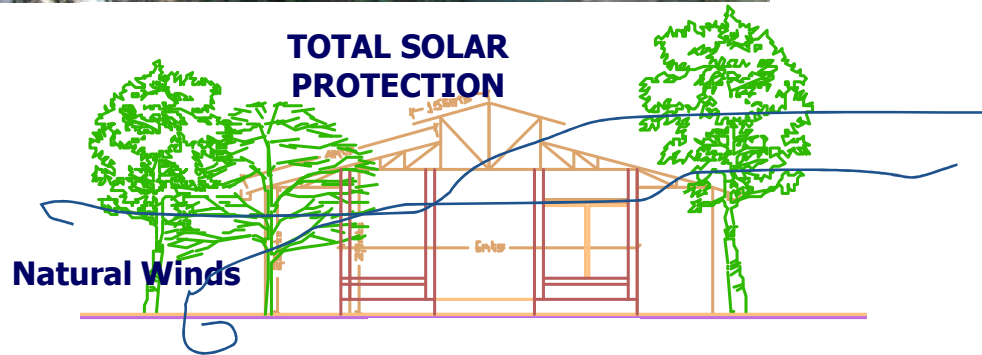
TWO ROOM UNIT "VILLAS DE SAN PABLO"



The Technical-Ecological Institute will consist of a k-12 school with environmentally-friendly classrooms that provide natural wind ventilation and complete solar protection



CLASSROOM



The community will have a strong and innovative environmental focus

Environmental components

- Parks
- Tree Planting
- Energy Alternatives (solar panels)
- Recycling Program
- Sewage, clean water and electricity
- Eco-friendly school (infrastructure and curriculum)



Central Plaza



Walkways

The Industrial Park for Micro-entrepreneurs will offer varied types of training and employment to community members

OBJECTIVES

- Construct a well suited park for micro-entrepreneurs with classrooms and work spaces
- Offer families employment and training in different areas, from baking to pottery making
- Allow families to start their own businesses







The project will build a community alliance with the Colombian National Police in order to keep the community safe



This high impact project offers an innovative model for creatively building assets among extremely vulnerable populations in Colombia on a large scale

Integral Community Development

<p>Housing + individual commitment</p>	<p>= community & assets</p>	
<p>Health + community access</p>	<p>= wellbeing</p>	
<p>Skills + financial + employment services</p>	<p>= empowerment & autonomy</p>	
<p>Economic opportunities + local inclusion + environmental focus</p>		<p>= sustainable growth</p> 

For more information regarding Give to Colombia

US Office

Executive Director: Angela Maria Tafur
naitafur@givetocolombia.org

Grants Manager: Juanita Amador
jamador@givetocolombia.org

Grants Associate: Mariana Cardenas
mariana.cardenas@givetocolombia.org

Phone: 305 6679484
1550 Madruga Avenue Suite 406
Coral Gables, Florida

Colombia Office

Project Manager: Alejandra Molina
alejandra.molina@givetocolombia.org

Strategic Alliances Manager: Nicole Stroh
nicole_stroh@compartamos.org

Phone: 571 6183146
Cra. 9 A # 99-02 Of. 801
Bogotá, Colombia

www.givetocolombia.org
info@givetocolombia.org